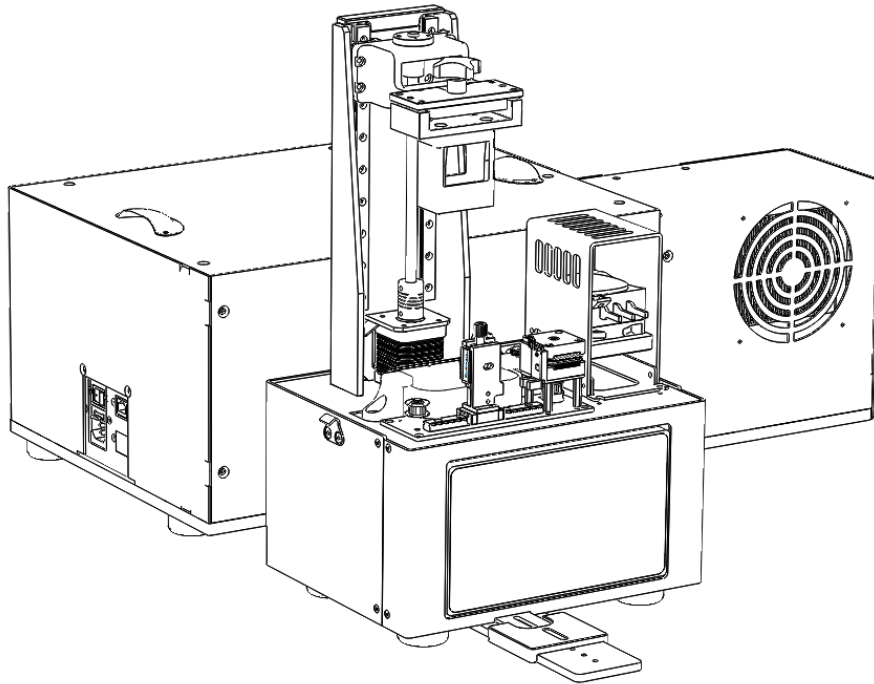


MonoPrinter.com

MONO3Z2 (2CH) Wiper & Heater

Rev. 1.0



Revision History

Rev. 1.0	11-18-2020	Initial draft based on Mono3Z-V2 design

Please read thoroughly and contact us if you have any further questions or suggestions at info@monoprinter.com

1. Installation of the wiper

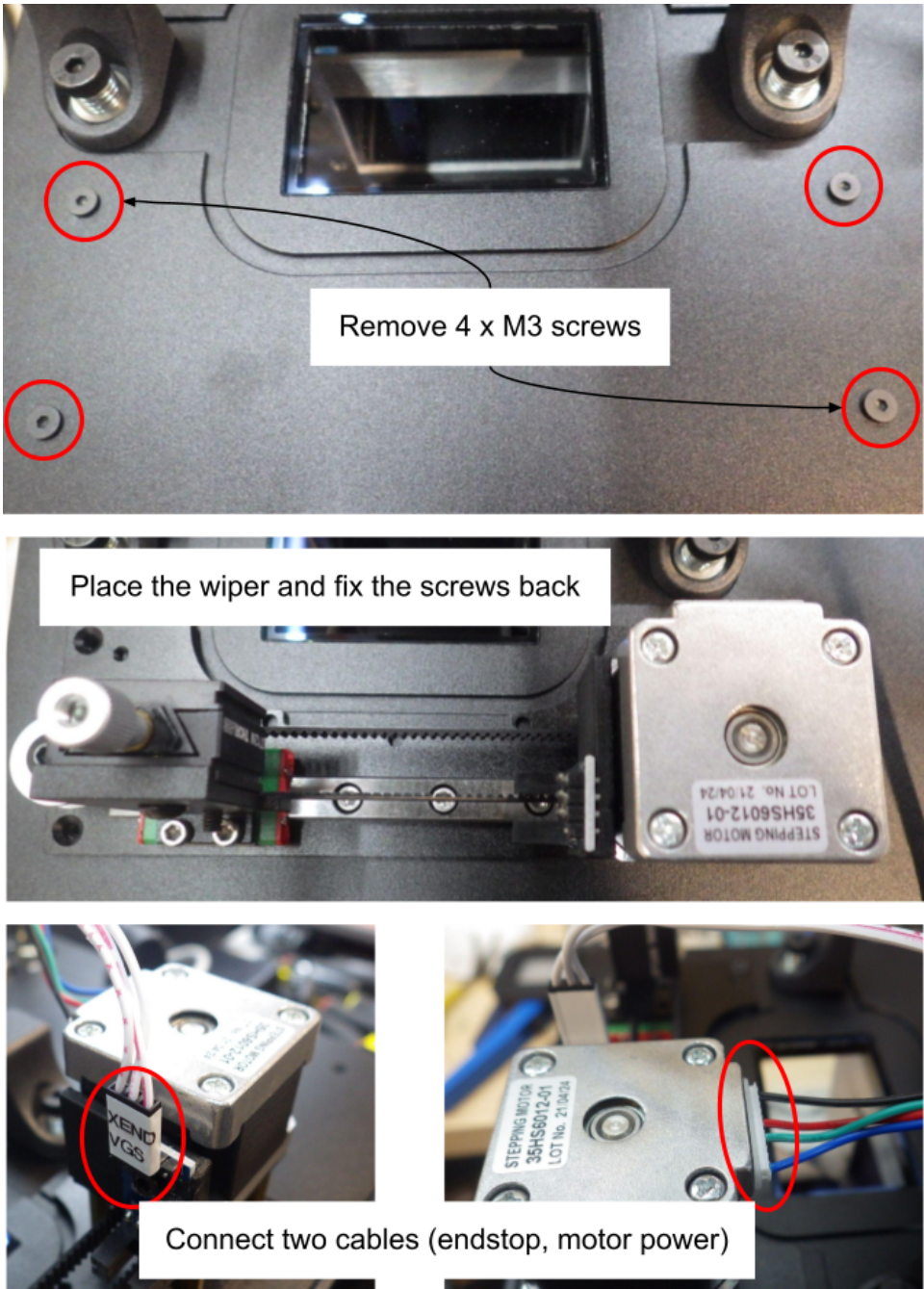


Fig. 1. Installation of the wiper

- After mounting the wiper assembly using 4 x M3 screws, connect two cables for an endstop sensor and motor power.

2. Installation of the heater

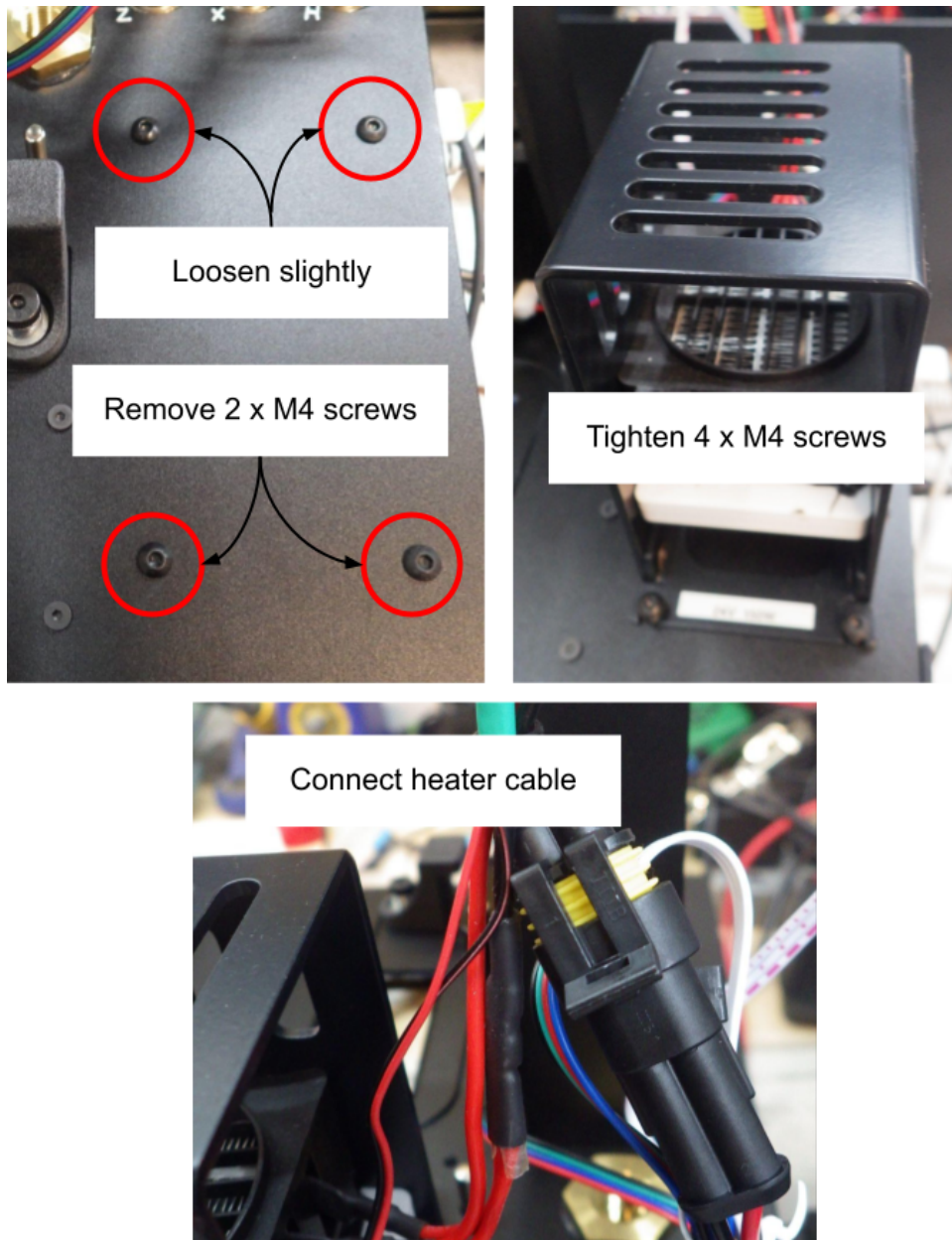


Fig. 2. Installation of the heater assembly

- Connect the heater cable after mounting the heater on the printer's top plate.

3. Wiper operational setting

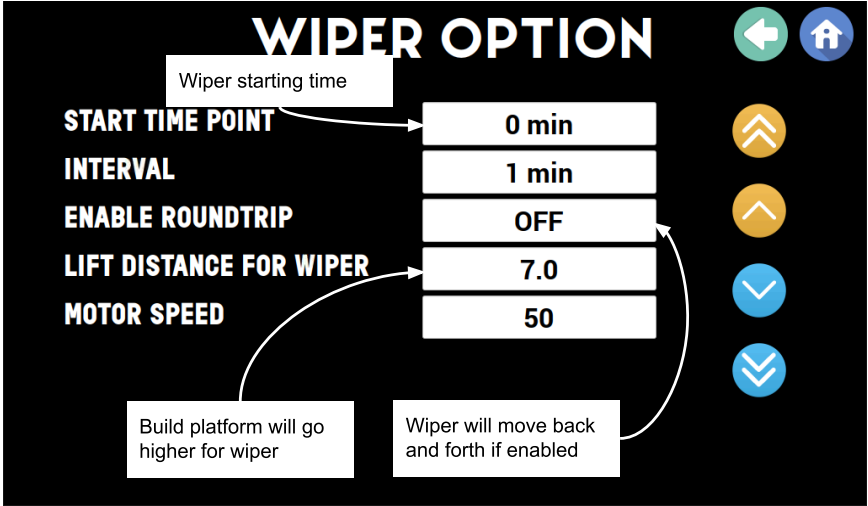


Fig. 3. Wiper options. This option is located at Home > Settings > Wiper Setting

4. Heater operation setting

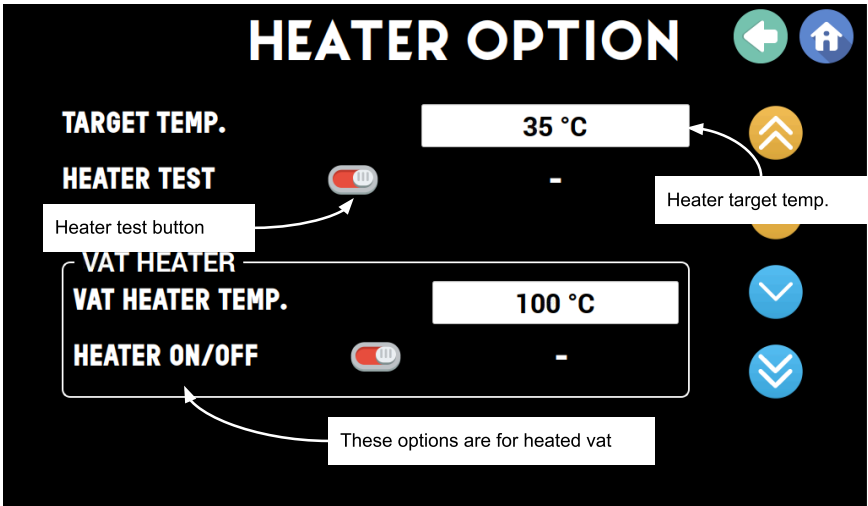


Fig. 4. Heater options.

- Check the heater operations before using it on the actual printing process.
- Heated vat is sold separately. Please contact us for more details.

5. Closing remarks.

- If you have any issues during installation, please contact us at info@monoprinter.com