

Digital Microscope

## Quick Start Guide

Beginner's  
guide

### INDEX

- 1 **Initial settings** (After the power has been turned ON and before starting observation)
- 2 **Observing in full focus at all times**
- 3 **Saving images**
- 4 **Viewing saved images**
- 5 **Why is initial setup for the XY stage necessary?**



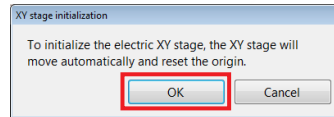
# Initial settings (After the power has been turned ON and before starting observation)

1 Turn the power ON.



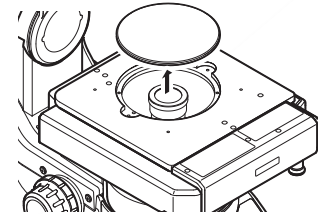
Press the power button on the right side of the front panel.

2 Set the origin for the motorized XY stage.



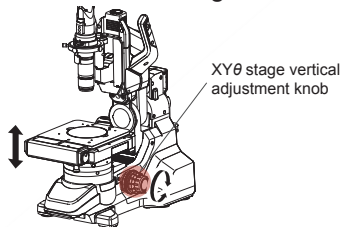
After turning on the power, once the stage initialization dialog box has appeared, click the "OK" button.

3 Ensure the black side of the stage plate is facing upwards.



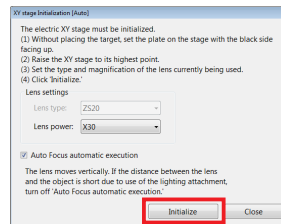
If the top surface of the plate on the motorized stage is not black, change it to black.

4 Adjust the height of the motorized XY stage.



Raise the stage to the highest point using the XYθ stage vertical adjustment knob.

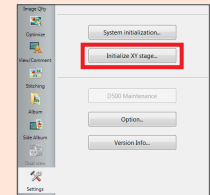
5 Click "Initialize".



Have the stage in focus in order to start the initialization of the stage.

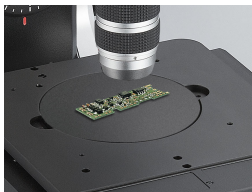
If initialization fails...

From the setting menu, click "Initialize XY stage" to execute initialization again.



# Observing in full focus at all times

1 Place the target on the stage.



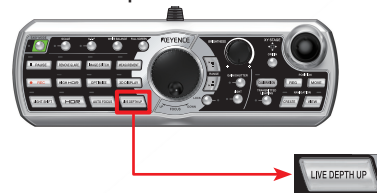
Place the target that you wish to observe in the center of the XY stage.

2 Adjust the magnification.



Adjust the zoom ring for the lens to the magnification at which you wish to perform observation.

3 Perform live depth composition.



Press the Live Depth Composition button on the console. The motorized Z stage starts moving up and down, bringing the entire field-of-view into focus..

4 Move the XY stage.

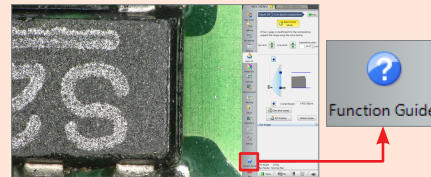


Operate the joystick on the console and move to the area that you wish to view. After moving, depth composition will start automatically.

## If live depth composition fails...

To make full use of the live depth composition, refer to the Function Guide in the controller.

- When areas are still out of focus...
- When too much light is reflected off of the surface making it difficult to see details on the part...
- To observe in 3D...



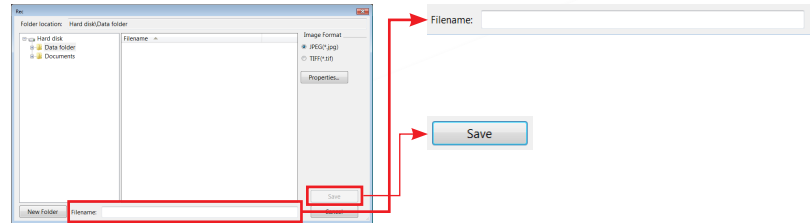
etc.

# Saving images

- 1 Press the REC button on the console.



- 2 Once you have selected a destination folder, entered a file name and pushed the save button, the image will be saved on the hard disk drive of the main unit.



## Recommended for those who wish to capture many images quickly



Auto record

Record folder location:

Hard disk\Documents

Image format:

JPEG (\*.JPG)

Filename prefix:

VHX\_

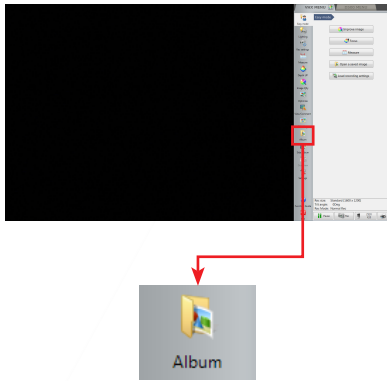
Auto record ON

Settings...

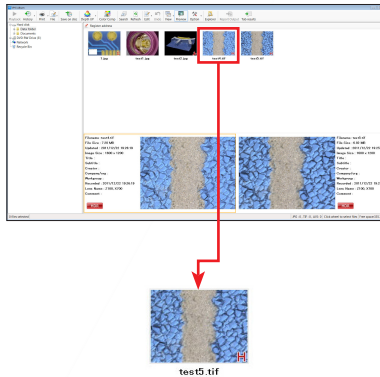
Click "Rec Settings" from the VHX MENU, and click "Auto record ON" from "Auto record". Then, begin image capture. Under this setting, images can be saved **without the need to enter a file name every time** an image is captured (sequential numerical suffixes are appended to file names).

## Viewing saved images

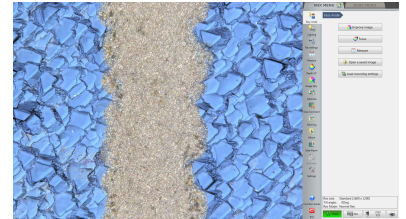
- 1 From the menu, click "Album".



- 2 Select the image that you wish to view and double click on the image icon.



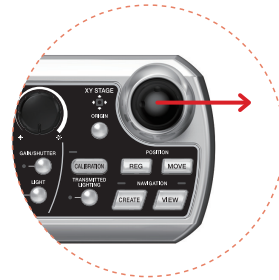
- 3 The selected image will be displayed on the monitor.



# Why is initial setup for the XY stage necessary?

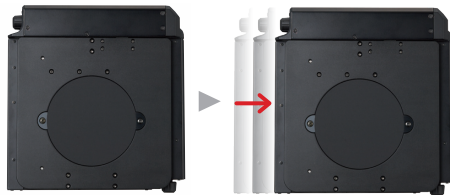
The "VHX-S550E" free-angle observation system base unit is an XY motorized stage that is also able to perform  $\theta$  rotation. It is equipped with an angle sensor that recognizes this rotational information. The integration of an angle sensor makes it possible to control XY movement so that it is just as seen on the screen, no matter what direction the stage is rotated.

In order to achieve smooth XY movement, the point of origin for the stage is found and angle recognition is executed as part of the initial setup.

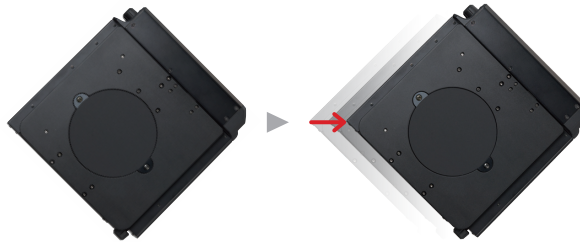


Just control the joystick

0° rotation angle



Regardless of the degree of rotation



Visit our Microscope Product website

www.digitalmicroscope.com



Specifications are subject to change without notice.

## KEYENCE CORPORATION

1-3-14, Higashi-Nakajima, Higashi-Yodogawa-ku, Osaka, 533-8555, Japan PHONE: +81-6-6379-2211

### AUSTRIA

Phone: +43 22 36-3782 66-0

### BELGIUM

Phone: +32 1 528 1222

### BRAZIL

Phone: +55-11-3045-4011

### CANADA

Phone: +1-905-366-7655

### CHINA

Phone: +86-21-68757500

### CZECH REPUBLIC

Phone: +420 222 191 483

### FRANCE

Phone: +33 1 56 37 78 00

### GERMANY

Phone: +49 6102 36 89-0

### HONG KONG

Phone: +852-3104-1010

### HUNGARY

Phone: +36 1 802 73 60

### INDIA

Phone: +91-44-4299-4192

### INDONESIA

Phone: +62-21-2939-8766

### ITALY

Phone: +39-02-6688220

### KOREA

Phone: +82-31-789-4300

### MALAYSIA

Phone: +60-3-2092-2211

### MEXICO

Phone: +52-81-8220-7900

### NETHERLANDS

Phone: +31 40 20 66 100

### POLAND

Phone: +48 71 36861 60

### ROMANIA

Phone: +40 269-232-808

### SINGAPORE

Phone: +65-6392-1011

### SLOVAKIA

Phone: +421 2 5939 6461

### SLOVENIA

Phone: +386 1-4701-666

### SWITZERLAND

Phone: +41 43-45577 30

### TAIWAN

Phone: +886-2-2718-8700

www.keyence.com

### THAILAND

Phone: +66-2-369-2777

### UK & IRELAND

Phone: +44-1908-696900

### USA

Phone: +1-201-930-0100

