

HydroSpeed™

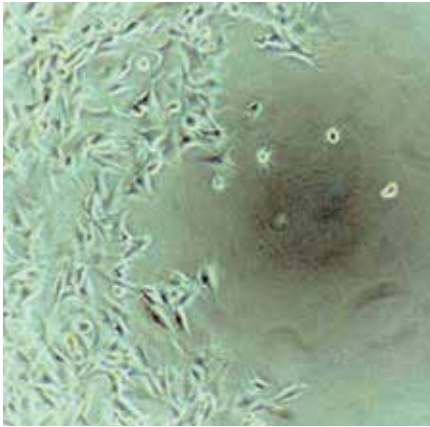
SPEED AND CONTROL FOR OPTIMIZED WASHING OF CELLS, BEADS AND ELISAS

21 CFR Part 11*

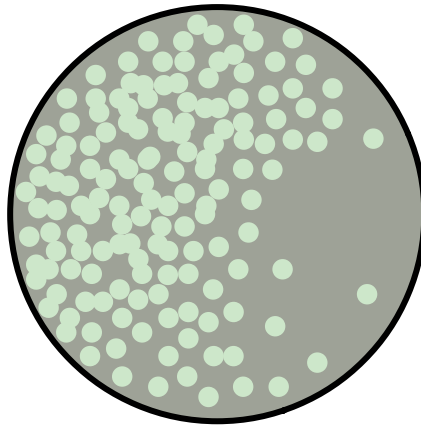


Are you washing away your cells?

Loosely adherent cell lines, such as P815 and HEK293, are commonly used for a wide range of research applications, but are challenging to wash for typical plate washers. Excessive dispense speeds can cause detachment of cells and holes in the cell layer. Coupled with loss of cells during poorly controlled aspiration, this can lead to reproducibility issues and high CVs, resulting in failed experiments, repeat testing and a loss of productivity.



Cell loss due to aggressive wash conditions



Schematic picture showing a damaged cell layer in a well



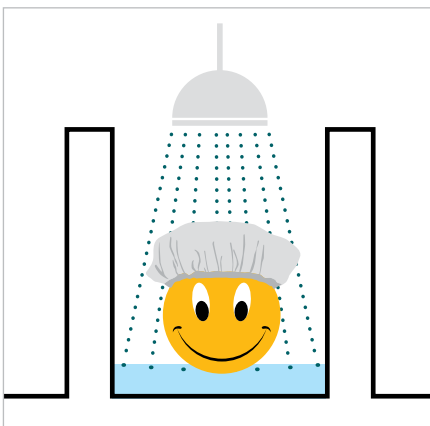
Failed results leading to loss of productivity

Discover how the HydroSpeed plate washer with Cell Protection™ can help you resolve these issues!

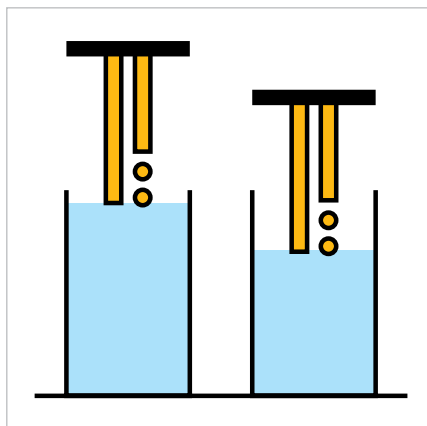
Based on more than 30 years of experience in automated liquid handling, we understand that weakly adherent cells require very gentle washing to achieve reproducible results. The HydroSpeed plate washer puts the user in control with Cell Protection, allowing you to dial-in extra gentle wash settings, specific to your cells, microplates and application.

Features of Cell Protection include:

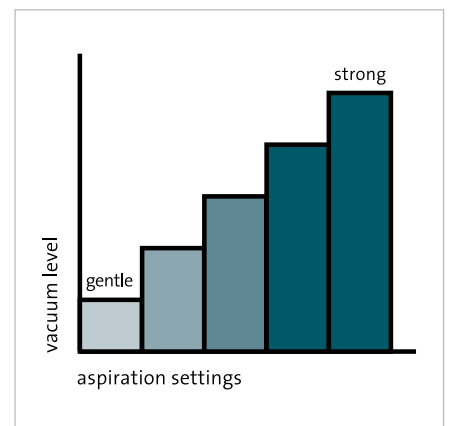
- **Dropwise dispense speed** to avoid cell detachment
- **Optimization of dispense position** to minimize turbulence in the wells
- **Tunable aspiration parameters**, including needle position and vacuum level, to avoid cell loss
- **Reduced costs** by eliminating the need for a dedicated cell washing head



Extra gentle wash settings for loosely adherent cells



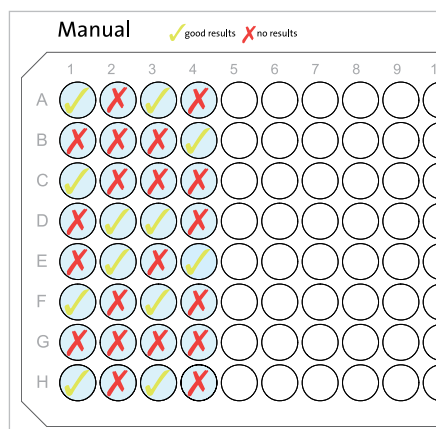
Optimized dispense position via Move function



Tunable aspiration rates to avoid cell loss

Are your magnetic beads being washed away?

Multiplexed assays using magnetic beads are becoming increasingly popular for a variety of applications, but achieving good wash results without losing beads remains a challenge. Automated washing protocols often suffer from low bead recovery rates due to insufficient bead settling by weak magnets. Poor control of aspiration parameters also makes it difficult to achieve low residual liquid volumes without significant loss of beads, leading to inconsistent results and high CV values.



Loss of magnetic beads due to insufficient bead settling



Poor control of vacuum level for aspiration

16020	0.06210	0.06100	0.06070	0.06000	0.06000
15870	0.06480	0.06340	0.06340	0.06570	0.06280
16220	0.06440	0.06320	0.06370	0.06280	0.06280
16037	0.06377	0.06253	0.06260	0.06283	0.06283
10176	0.00146	0.00133	0.00165	0.00285	0.00285
16020	0.06210	0.06100	0.06070	0.06000	0.06000
15870	0.06480	0.06340	0.06340	0.06570	0.06280
16220	0.06440	0.06320	0.06370	0.06280	0.06280
16037	0.06377	0.06253	0.06260	0.06283	0.06283
16220	0.06440	0.06320	0.06370	0.06280	0.06280
16159	0.06419	0.06298	0.06333	0.06261	0.06261
10106	0.00037	0.00038	0.00064	0.00002	0.00002
16020	0.06210	0.06100	0.06070	0.06000	0.06000
13438	0.03616	0.03553	0.03551	0.03462	0.03462
16020	0.06210	0.06100	0.06070	0.06000	0.06000
15870	0.06480	0.06340	0.06340	0.06570	0.06280
16220	0.06440	0.06320	0.06370	0.06280	0.06280
16037	0.06377	0.06253	0.06260	0.06283	0.06283
10176	0.00146	0.00133	0.00165	0.00285	0.00285
10175	0.00052	0.00045	0.00057	0.00166	0.00166
16020	0.06210	0.06100	0.06070	0.06000	0.06000

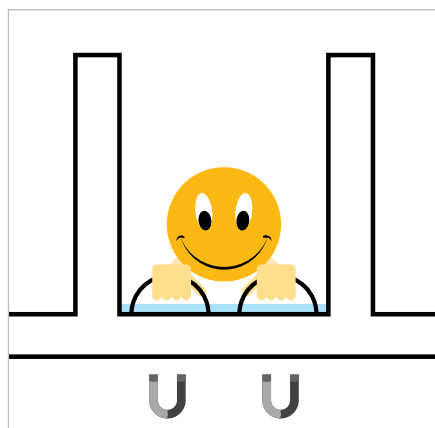
Failed experiments due to inconsistent results

Discover how the HydroSpeed plate washer can help you to overcome these problems by using two magnets per well!

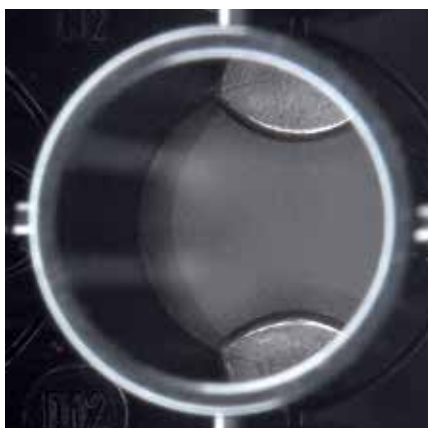
Keeping magnetic beads away from the needles during aspiration helps to improve washing performance. Using a patented design with two magnets per well, the HydroSpeed washer protects magnetic beads by settling them at the side of the well during aspiration, achieving low residual volumes while maintaining high bead recovery rates.

Bead recovery features include:

- **Powerful rare-earth magnets** to provide fast and efficient bead settling
- **Two magnets per well** to keep the beads out of the way during washing
- **Adjustable vacuum level and aspiration position** for optimized bead recovery
- **Supports filter washing** of non-magnetic beads via vacuum filtration option



Efficient bead settling via powerful magnets



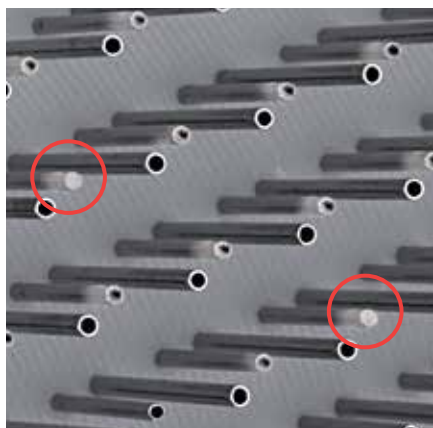
Optimized bead recovery using two magnets per well



Processing of non-magnetic beads via vacuum filtration module

Are you suffering from needle clogging during ELISA washing?

Automated ELISA processing using a microplate washer is now a routine task for many laboratories, yet crystallization of wash buffer within the aspiration/dispense needles remains a common problem. This causes clogging of the needles while the washer is idle between plates, and can lead to loss of entire runs as a result of overflowing wells. Cleaning of wash heads is laborious and time consuming, and can significantly affect productivity if washers are integrated into automated liquid handling systems.



Picture showing blocked dispense needles



Spilling of plate caused by clogged needles



Tedious cleaning of spills

Discover how the HydroSpeed plate washer can take the hassle out of ELISA washing!

The innovative Anti-Clogging™ function actively prevents needle clogging by automatically rinsing and soaking the wash head when the HydroSpeed washer is idle for a pre-defined period. In addition, the wash head can be easily removed for ultrasonic cleaning, with a self-alignment feature to simplify reinstallation.

Highlights of active clog prevention include:

- **Anti-Clogging function** actively prevents needle blockage
- **Pre-defined rinse** procedure makes preventive maintenance easy to perform
- **Easy X-change wash heads** allow intense cleaning in an external ultrasonic bath
- **Wash bottle filters** prevent particles from entering the wash head



Anti-Clogging function prevents needle blockage



Straightforward handling of Easy x-change wash head without tooling



Intense cleaning of wash head possible using an ultrasonic bath

Fast, reliable washing in 96- and 384-well formats.



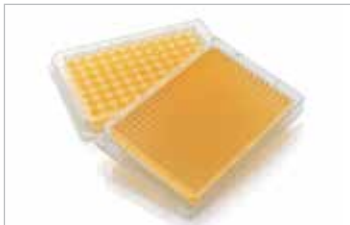
ON-BOARD CONTROL AT YOUR FINGERTIPS

Easy-to-use touchscreen interface allows full on-board operation, eliminating the need for an external PC to define wash programs and plate parameters.



READY TO START

- New plate assistant function for easy teaching of new plates
- Pre-defined plate library, with typical plate parameter settings for commonly used 96- and 384-well plates, allows rapid setup of new wash protocols



FORMAT AND APPLICATION FLEXIBILITY

- 96 indexing wash head allows HydroSpeed to be used for washing both 96- and 384-well plates, without swapping wash heads
- 96 indexing wash head supports three applications including ELISA washing, extra gentle cell washing and bead washing providing uncompromised wash performance
- 384HT wash head offers high speed parallel processing of all 384 wells



READY FOR RELIABLE OPERATION ON A ROBOTIC PLATFORM

The HydroSpeed washer incorporates an array of sensors – such as the plate positioning sensor – to ensure secure and reliable integration into automated platforms for true walkaway processing.



LIQUID LEVEL MONITORING IN WASTE BOTTLE

- Integrated pressure-based liquid level detection (pLLD) system informs operator when waste bottle is full
- pLLD avoids the risk of blockage common to swimmer-based LLD systems mounted in the waste bottle, increasing safety and eliminating additional cleaning steps

21 CFR Part 11*

*REGULATORY COMPLIANCE

In combination with HydroControl™ software, it also provides FDA CFR 21 Part 11 functionality, including electronic records, signatures and audit trails

Specifications

General

Number of disp. channels	1-4
Wash head types	96HT for high speed washing in 96-well format 384HT for high speed washing in 384-well format 96-indexing for flexible washing in 96- and 384-well formats
Wash volume, 96-well format	50-3,000 µl in increments of 50 µl
Wash volume, 384-well format	10-1,000 µl in increments of 10 µl

Performance

Wash times, 96-well format	15 secs for 1-cycle wash incl. crosswise asp. step (disp. vol: 300 µl/well, disp. rate: 5, asp. rate: 5, 96HT head)
Wash times, 384-well format	15 secs for 1-cycle wash incl. asp. step (disp. vol: 100 µl/well, disp. rate: 5, asp. rate: 5, 384HT head)
Dispense accuracy @ 300 µl, 96-well format	≤ 5 % across plate, gravimetric measurement**
Dispense accuracy @ 100 µl, 384-well format	≤ 5 % across plate, gravimetric measurement***
Dispense uniformity @ 300 µl, 96-well format	≤ 3 % across plate**
Dispense uniformity @ 100 µl, 384-well format	≤ 4 % across plate***
Residual volume, 96-well format	≤ 2 µl per well, crosswise asp.**
Residual volume, 384-well format	≤ 2 µl per well, single asp.***

Vacuum range for vacuum filtration -50 to -300 mBar

Power

Power supply	115 V / 60 Hz 230 V / 50 Hz
Consumption	< 300 VA

Physical

External dimensions (height/width/depth)	28.8 cm (11.3in) / 38.8 cm (15.3in) / 43.0 cm (16.9in)
Weight	15 kg (33lbs)
Color	<input type="checkbox"/> <input type="checkbox"/> <input type="checkbox"/>

** disp. rate: 5, respectively asp. rate: 5, 96HT head, wash buffer plus 0.1% Tween, Greiner* flat-bottom plate

*** disp. rate: 5, respectively asp. rate: 5, 384HT head, wash buffer plus 0.1% Tween, Greiner flat-bottom plate

.....
Australia +61 3 9647 4100 **Austria** +43 62 46 89 330 **Belgium** +32 15 42 13 19 **China** +86 21 220 63 206 **France** +33 4 72 76 04 80 **Germany** +49 79 51 94 170
Italy +39 02 92 44 790 **Japan** +81 44 556 73 11 **Netherlands** +31 18 34 48 17 4 **Nordic** +46 8 750 39 40 **Singapore** +65 644 41 886 **Spain** +34 93 595 25 31
Switzerland +41 44 922 89 22 **UK** +44 118 9300 300 **USA** +1 919 361 5200 **Other countries** +41 44 922 81 11

Tecan Group Ltd. makes every effort to include accurate and up-to-date information within this publication, however, it is possible that omissions or errors might have occurred. Tecan Group Ltd. cannot, therefore, make any representations or warranties, expressed or implied, as to the accuracy or completeness of the information provided in this publication. Changes in this publication can be made at any time without notice. All mentioned trademarks are protected by law. In general, the trademarks and designs referenced herein are trademarks, or registered trademarks, of Tecan Group Ltd., Männedorf, Switzerland. A complete list may be found at <http://www.tecan.com/trademarks>. Product names and company names that are not contained in the list but are noted herein may be the trademarks of their respective owners. For technical details and detailed procedures of the specifications provided in this document please contact your Tecan representative.

Tecan is in major countries a registered trademark of Tecan Group Ltd., Männedorf, Switzerland.

© 2022 Tecan Trading AG, Switzerland, all rights reserved.

www.tecan.com/hydrospeed



TECAN.